



Mission Statement

The Blue Ridge Fine Arts Guild (BRAG) promotes the works and activities of artists working in two-dimensional media in Yancey, Mitchell, and Avery counties and the surrounding areas of Western North Carolina. BRAG is an avenue for artist education and exposure through programs, workshops, exhibitions, and the internet, and seeks to promote and encourage the arts among its members, local schools, and the public.

Check out our On-Line Store to use PAYPAL



PayPal



July 2013- BRAG Newsletter

From the Editor...

Where did June disappear to? And July? The first 4 days of July brought more rain than we normally get in the entire month. Mold is growing on mold. There is chatter on the internet about building arcs. Hmmm....

July marks the beginning of a new year for BRAG. It's time to pay member dues again - and you'll be able to do that at our next meeting - on Monday, July 15th.

The John MacDonald workshop is this month, the weekend before our next meeting. Participating members are scrambling to gather workshop supplies. Cheap Joe's loves to see us coming! I'll be sure to include some photos in next month's newsletter.

Our exhibit, Made to Measure, at TRAC is coming right up - just about 2 months away now. Have you finished your entry yet?

See you at the meeting.

Don't forget... paint first!

Susan Garriques

News

Final tweaks to the Rules and Regulations for the upcoming Made To Measure Exhibit (September 14, 2013 thru October 12, 2013) will be discussed during the July meeting. Remember, there are size limitations on paintings for this show.

Our guest artist at the July meeting is Tom Root. Tom, an amazing artist, is the son-in-law of BRAG members Roy and Josie Nichols. Be sure to stop by www.TomRootArtist.com to see Tom's work before the meeting. (editors note: I'm sure if you do see his work, you won't want to miss the meeting!)

Member dues are due in July. If you plan to pay your dues during the meeting on Monday, July 15th, in order to have as much time as possible for our demonstrator please download and complete your membership form. It can be obtained at: http://www.bragwnc.com/membership.html Please make out your check to BRAG in the amount of \$25 for individuals or \$40 for families. Judy Larkins, Treasurer, will accept the checks and membership forms and issue a membership card. Paper membership forms will be available at the meeting.

At June's monthly meeting, Wendy Outland gave another excellent presentation - this one on Ethics and Sales. She has since emailed us sample copies of a sample biography and resume as well as a chart about effective communication and an outline of a sales workshop. Laurel has emailed those to members and paper copies will be available at the July meeting.

"Postcards", a traveling exhibit of postcard-sized art work created and donated by area artists, is now on display at the Burnsville TRAC Gallery. BRAG Members Sandra Gates, Kathleen Turczyn and Susan Garriques have art in this exhibit. It is a fascinating show with more than 70 works. The exhibition at the Burnsville Gallery runs through the end of July.

The Toe River Valley Plein Air Painters and BRAG Members, Kathleen Turczyn, Katherine McCarty, Laurel Lovrek, Sandra Gates, Susan Garriques, and Barbara Deschenes met for a day of painting up at Cloudland on Roan Mountain on June 19th. The rhododendrons were just starting to open and we were above the clouds all morning. A great day for painting.

Ongoing events

Scott Boyle is offering a 3-Day Plein Air workshop October 3-5th. Cost for the 3 day workshop is \$210. There is a \$100 deposit to reserve your space. The balance will be due on September 15th. Applications will be available at the July meeting.

Creative Challenge - Each month a photo will be included in the newsletter and members are encouraged to paint from that photo. It should be quite interesting to see how everyone handles the subject matter. Feel free to crop and edit as you wish. You may bring your paintings to the meetings, or if you would prefer, send photos of your paintings to Susan Garriques for the newsletter. And... you don't have to finish it for a specific month - there won't be any deadlines. So if you don't get to paint this month's photo till November or December, no worries. Just have fun. (if you would like a



Artist: Carol W. Bailey Turks Cap Lilies



Creative Challenge July



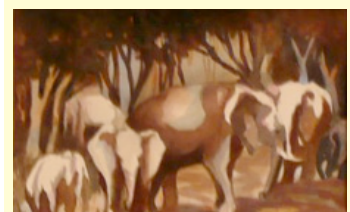
Artist: Sharon Bradshaw First Born - 1922



Artist: Susan Garriques 4th of July



Artist: Sandra Gates Summer Flowers



higher resolution image (larger image) for printing - or an image from a previous Creative Challenge, please email Susan Garriques)

Internet Tidbits -

Have you been thinking about the meaning of your work? Check this out
<http://professionalartistmag.com/news/2013/jun/25/search-meaning-self-awareness/>

Do you struggle with painting trees? Good info to bookmark...
<http://www.artistdaily.com/blogs/pleinair/archive/2008/10/22/anatomy-of-the-landscape-trees.aspx?a=ar130504>

Classifieds -

**Arts Council of Henderson County
Announces Call for Artists for Tenth Annual BRING US YOUR BEST**

The Arts Council of Henderson County is making a call for artists to enter Bring Us Your Best X, an all media visual art exhibition, which will open with an awards reception on Friday, August 9 from 5-7pm. Regional visual artists from across the spectrum, from part-time hobbyists to full-time professionals, are called to enter their work in Bring Us Your Best, now in its tenth year. The popular exhibition will again be hosted by Blue Ridge Community College, 180 West Campus Drive, Flat Rock, in the Conference Hall of the Technology Education & Development Center. Entries will be received on Monday, August 5, and Tuesday, August 6, from 10am to 4pm. No late entries will be allowed. There are no geographic restrictions for entrants.

A juried and judged competition, Bring Us Your Best X offers \$2,000 in cash awards in addition to \$500 in gift certificates from Starving Artist Fine Art Supplies and Custom Framing. First, second, and third place cash prizes will be awarded in each of four categories: two-dimensional work, three-dimensional work, fine craft, and photography. All gallery visitors will be encouraged to vote for their favorite piece in the show, and the "People's Choice" award winner will be announced on the final day of the show. The winning artist will receive a \$250 Starving Artist gift certificate.

The exhibition will be on display from Thursday, August 15, through Friday, August 30, 10am-4pm weekdays. The reception and exhibition are free and open to the public, and handicapped accessible. All artwork will be priced for sale during the exhibit.

Artists can find the prospectus with information for entering the show at www.acofhc.org, or by contacting the Arts Council at acofhc@bellsouth.net or 828-693-8504.

BRAG Member, Kathleen Deasy, is offering painting and drawing in her studio. She paints with both oils and acrylics. Classes are geared to new painters and artists that want to explore new techniques using texturing and adding dimension to their work using cloth and other natural materials that create 3 dimensional paintings. The cost is \$18 for an hour and half session and I am doing the classes by appointment. Kathleen's studio is **White Oak Art Studio in Bakersville** at 46 White Oak Rd. Call 828-688-1882 for more info or to schedule a lesson.

One last note - it's about the Money Jar. You may have noticed a vase or a jar placed near the refreshments at each meeting and you may have assumed that was to help pay for the coffee and cookies. BUT..... BRAG pays the Town Center \$30 for each night that we meet. The "Money Jar" is meant to help pay the rent. If each member attending the meeting will contribute \$1 it will just about cover the cost of the rental. Please don't forget to add your dollar when you come to the meetings. Every dollar helps!

- *****
Archive of Newsletters:
December Newsletter 2011.pdf
January/February Newsletter 2012.pdf
March Newsletter 2012.pdf
April Newsletter. 2012.pdf
May Newsletter 2012.pdf
June Newsletter 2012.pdf
July Newsletter 2012.pdf
August Newsletter 2012.pdf
September Newsletter 2012.pdf
October Newsletter 2012.pdf
November Newsletter 2012.pdf
December Newsletter 2012.pdf
January Newsletter 2013.pdf
February Newsletter 2013.pdf
March Newsletter 2013.pdf
April Newsletter 2013.pdf
May Newsletter 2013.pdf
June Newsletter 2013.pdf



Artist: Anne Sabri *Elephants*



Artist: Kathleen Turczyn *Leda*

